

IP Masking:

Big Change to Protect Editor Privacy

**WIKIMANIA
SINGAPORE**

Niharika Kohli / NKohli (WMF)
Madi Moss / MMoss (WMF)



Speakers



**WIKIMANIA
SINGAPORE**



Niharika Kohli

In the Wikimedia movement since 2014

I worked as a software engineer in the Community Tech team for three years.

Now, as a product manager, I'm leading the Anti-Harassment Tools team, building IP Masking.

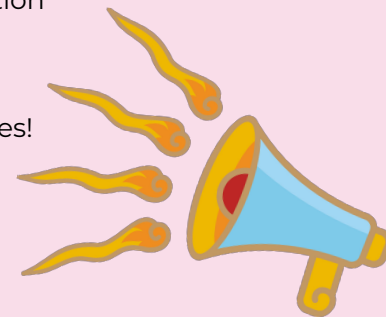


Madi Moss

Editing since 2010/2017, I joined the Foundation as a privacy attorney in 2021.

I went to law school specifically because I was interested in the intersection of law and the Wikimedia movement.

Talk to me about templates!



Agenda

Rationale

Our approach

Design mockups

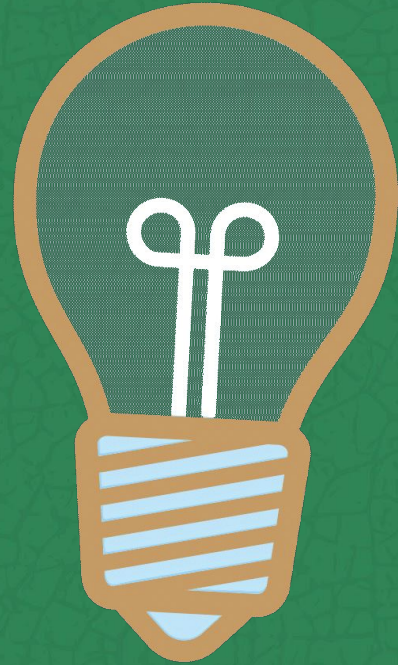
Work with us

Roadmap

**WIKIMANIA
SINGAPORE**

Rationale

**WIKIMANIA
SINGAPORE**



What is the problem we are trying to solve?

WIKIMANIA
SINGAPORE

For editors who are not logged into an account:

- IP addresses are **stored forever**, and
- IP addresses are **publicly available**

Whereas the IP addresses of editors who are logged into an account are only stored for 90 days and not shared publicly.

For more information, see our [Privacy policy](#) and [Data retention guidelines](#).

What is the problem we are trying to solve?

User talk: **139.99.197.10**
From Wikipedia, the free encyclopedia

Shared IP address

This IP address, **203.99.197.100**, is registered to **Cognizant Technology Solution India Pvt Ltd** and may be shared by multiple users. If **proxy servers** or **firewalls** are used, this IP address may represent many users at many personal computers or devices.

For this reason, a message intended for one user may be received by another, and a block intended for disruptive users may also affect innocent users. If you are editing from this address and are frustrated by irrelevant messages, you can avoid them by **creating an account** for yourself. Sometimes, in response to **vandalism**, you may be temporarily unable to create an account.

If you are autoblocked repeatedly, contact your **Internet service provider** or network administrator and request it contact Wikimedia's **XFF project** about enabling X-Forwarded-For HTTP headers on its proxy servers so that blocks will affect only the intended user. Alternatively, you can list this IP address at [Wikipedia:WikiProject on XFFs](#).

⚠ In response to vandalism from this IP address, **abuse reports** may be sent to its network administrator for investigation.

Review contributions carefully if blocking this IP address or reverting its contributions. If a block is needed, administrators should consider a **soft block** using [Template:Anonblock](#).

S Network administrators, to monitor this IP address for vandalism, can subscribe to a **web feed** of this page in either **RSS** or **Atom** format.

- (최신 | 이전) 2015년 1월 3일 (토) 17:10 Cube52 (토론 | 기여) [잔글](#) .. (38,552 바이트) (-516) .. (124.212.214.27(토론)의 편집을 Cube52의 마지막 판으로 되돌림) (편집 취소)
- (최신 | 이전) 2015년 1월 3일 (토) 17:10 **1.212.214.2** (토론) .. (39,068 바이트) (+516) .. (Cube52(토론)의 13393172판 편집을 되돌림) (편집 취소)
- (최신 | 이전) 2015년 1월 3일 (토) 17:10 Cube52 (토론 | 기여) [잔글](#) .. (38,552 바이트) (-516) .. (124.212.214.27(토론)의 편집을 Cube52의 마지막 판으로 되돌림) (편집 취소)
- (최신 | 이전) 2015년 1월 3일 (토) 17:10 **1.212.214.2** (토론) .. (39,068 바이트) (+516) .. (Cube52(토론)의 13393164판 편집을 되돌림) (편집 취소)
- (최신 | 이전) 2015년 1월 3일 (토) 17:10 Cube52 (토론 | 기여) [잔글](#) .. (38,552 바이트) (-516) .. (124.212.214.27(토론)의 편집을 Cube52의 마지막 판으로 되돌림) (편집 취소)

CC BY-SA 4.0, Cube52 (red boxes added for emphasis) - [File:Korean wikipedia edit war.jpg](#)



CC BY-SA 4.0, Steven Walling (red box added for emphasis) - [File:Screenshot of shared IP user talk page, archived.png](#)

WIKIMANIA
SINGAPORE

What is the problem we are trying to solve?

- IP addresses are personal data.
- How we collect, use, and share personal data is subject to various laws.
- Our current status quo presents various risks:
 - Surveillance risks for our users
 - Legal risks
 - Falling short of user expectations



What is the problem we are trying to solve?

While addressing those risks, we also have to consider what our users need to protect the projects. **IP addresses are invaluable tools when dealing with harassment, abuse, and vandalism.**

We don't want to make changes without giving the communities appropriate mechanisms to handle the impact.

**WIKIMANIA
SINGAPORE**



Our approach

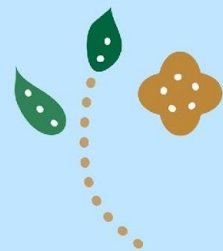
**WIKIMANIA
SINGAPORE**



Our approach

We have divided the work into these phases:

1. Build tools to **reduce our reliance** on IP addresses (directly)
2. **Mask IP addresses** and replace them with an anonymous identifier
3. Work with communities to **migrate existing software**



How does this address the problem?

For editors who are not logged into an account:

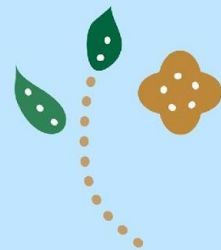
- IP addresses **will not** be stored forever, and
- IP addresses **will not** be publicly available

1. Reducing reliance on IP addresses

We built the **IP Info feature** to allow users who need access to critical data for anti-vandalism to do so without requiring access to the IP address itself.

We are adding a more reliable data source (Spur) to have better detection for proxies.

^ IP Information		
Location Hamilton, CA, Ontario	Behaviors File sharing	ⓘ Active blocks No active blocks. Logs
ISP Bell DSL Internet Ontario	Risks Tunnel	ⓘ Contributions 256 local edits (200 made in the last 24 hours) Global contributions XTools
ASN ⓘ 577	Connection type VPN	ⓘ
Organization Bacom	Operator Mullvad	ⓘ
VERSION IPv4	Proxies Not available	
	Count 3	



2. Replacing IPs with a new identifier

Savitribai Phule: Revision history

[View logs for this page \(view filter log\)](#)

▼ **Filter revisions**

External tools: [Find addition/removal](#) (Alternate) · [Find edits by user](#) (Alternate) · [Page statistics](#) · [Pageviews](#) · [Fix dead links](#)

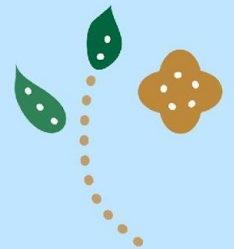
For any version listed below, click on its date to view it. For more help, see [Help:Page history](#) and [Help:Edit summary](#). (cur) = difference from (prev) = difference from preceding version, m = minor edit, → = section edit, ← = automatic edit summary (newest | oldest) View (newer 50 | older 50) (20 | 50 | 100 | 250 | 500)

- [\(cur | prev\)](#) HH:MM, DD Mon YYYY . . . [Killy](#) ([talk](#) | [contribs](#)) . . . (BBB bytes) (+2) . . . ([Reason](#)) ([undo](#))
- [\(cur | prev\)](#) HH:MM, DD Mon YYYY . . . [Beagle7](#) ([talk](#) | [contribs](#)) . . . (BBB bytes) (+2) . . . ([Reason](#)) ([undo](#))
- [\(cur | prev\)](#) HH:MM, DD Mon YYYY . . . [?1729](#) [Show IP](#) ([talk](#) | [contribs](#)) . . . (BBB bytes) (+2) . . . ([Reason](#)) ([undo](#))
- [\(cur | prev\)](#) HH:MM, DD Mon YYYY . . . [ThaBot](#) ([talk](#) | [contribs](#)) . . . (BBB bytes) (+2) . . . ([Reason](#)) ([undo](#))
- [\(cur | prev\)](#) HH:MM, DD Mon YYYY . . . [SMB](#) ([talk](#) | [contribs](#)) . . . (BBB bytes) (+2) . . . ([Reason](#)) ([undo](#))
- [\(cur | prev\)](#) HH:MM, DD Mon YYYY . . . [?1729](#) [Show IP](#) ([talk](#) | [contribs](#)) . . . (BBB bytes) (+2) . . . ([Reason](#)) ([undo](#))
- [\(cur | prev\)](#) HH:MM, DD Mon YYYY . . . [?19743](#) [Show IP](#) ([talk](#) | [contribs](#)) . . . (BBB bytes) (+2) . . . ([Reason](#)) ([undo](#))
- [\(cur | prev\)](#) HH:MM, DD Mon YYYY . . . [Beagle7](#) ([talk](#) | [contribs](#)) . . . (BBB bytes) (+2) . . . ([Reason](#)) ([undo](#))

IP editors will receive a new identity:
a **temporary account**.

Temporary accounts will be tied to their browser and last as long as the cookie does (up to 12 months).

Rather than each edit attributed to an IP address, multiple IP addresses can be linked to a given temporary account.



Who can see IP addresses?

**WIKIMANIA
SINGAPORE**

Temporary account IP addresses will be accessible to the following users:

- Stewards and checkusers (by default)
- Admins who opt-in
- Patrollers who opt-in and have:
 - ≥ 300 edits,
 - ≥ 6 months old account, and
 - ≤ 1 project block

Communities are also encouraged to create more restrictive guidelines for patrollers.

For more information, see the policy at

[\[\[wmf:Access to temporary account IP addresses\]\]](#)

Who can see IP addresses?

WIKIMANIA
SINGAPORE

IP addresses will **ONLY** be accessible to users who meet those requirements.

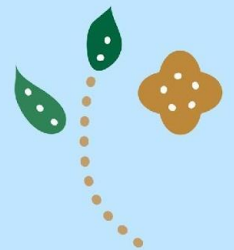
This does not include:

- Public access

Users who do not qualify can still use the IP Info feature as long as they are at least autoconfirmed.

3. Migrating tools

- Several tools also need IP address access to gather data about potential for abuse.
- These **tools will need to be updated** so that they can function after IP Masking deployment.
- We will **ask volunteers** to update tools maintained by them.
- We will **provide technical support** throughout this process, as needed.



IP Masking rollout will be **slow**. We will closely work with the communities to minimize disruption to existing workflows.

We will also focus on gathering community feedback with each rollout.

**WIKIMANIA
SINGAPORE**



Mockups

WIKIMANIA
SINGAPORE



Key design principles

Parity with legacy IP editor experience

Temporary accounts should feel ephemeral

Highlight incentives for creating an account and nudge user towards it

Clarity that anyone can edit

Guidance and education incorporated in the new experience

Unregistered editor: First edit

Kouign-amann

Article Talk

Read Edit View history

Paragraph Undo Cite Insert

Help ? Publish changes...

Kouign-amann (pronounced [kwɛ̃j̃ aˈmɑ̃]; pl. *kouignoù-amann*) is a sweet **Breton cake**, made with **laminated dough**. It is made with bread dough (nowadays sometimes **viennoiserie** dough), containing layers of butter and incorporated sugar, and a few layers. The cake is slowly baked until the sugar **caramelizes** and the recipe's butter (in fact the steam of the 20 percent water in the dough, resulting in its layered structure. A smaller version, "kouignette", is similar to a muffin-shaped, caramelized **croissant**. A specialty of the town of **Douarnenez** in **Finistère**, **Brittany**, where it originated around 1860, the pastry is attributed to **Yann Le Du**. A specialty of the town of **Douarnenez** in **Finistère**, **Brittany**, where it originated around 1860, the pastry is attributed to **Yann Le Du**. Its name comes from the Breton language words for cake (**kouign**) and butter (**amann**), and in 2011 the *New York Times* described it as "the most popular pastry in all of Europe."^[2]

1 notice

You are not logged in. Once you make an edit, a **temporary account** will be created for you to protect your privacy. [Learn more.](#)
Log in or **create an account** to get credit for future edits and to access other features.

Kouign Amann



Kouign amann pastry

Type	Cake
Place of origin	France
Region or state	Brittany
Main ingredients	Yeast-leavened dough, butter, sugar

Media: Kouign-amann

Recipe [edit]



Individual cake

The strict original Douarnenez recipe requires a ratio of 40 percent dough, 30 percent butter, and 30 percent sugar.^[3] Traditionally, kouign-amann is baked as a large cake and served in slices, although recently, especially in North America, individual cupcake-sized pastries (kouignettes) have become more popular.^[*citation needed*]

Popularity [edit]

The kouign-amann has been a staple pastry at many Japanese bakeries after becoming popular in the late 1990s.^{[4][5]}

In 2014, episode 7 of *series 5* of the BBC's *The Great British Bake Off*^[6] featured the kouign-amann. In 2015, notable bakeries in New York,^[7] Washington D.C.,^[8] Boston,^[6] Salt Lake City,^[9] and San Francisco began to sell the pastry.^{[10][11][12]} In **Denver**, several bakeries offer varieties; some shorten the name to "queen".^[13]

Unregistered editor: Temporary account creation

Kouign-amann

✓ Your edit was saved.

Article Talk

From Wikipedia, the free encyclopedia

Kouign-amann (pronounced [kwiɲ aˈmɑ̃n]; pl. *kouignoù-amann*) is a sweet [Breton cake](#), made with [laminated dough](#). It is a round multi-layered cake, originally made with bread dough (nowadays sometimes [viennoiserie](#) dough), containing layers of butter and incorporated sugar, similar in fashion to [puff pastry](#), albeit with fewer layers. The cake is slowly baked until the sugar [caramelizes](#) and the recipe's butter (in fact the steam of the 20 percent water in the butter) expands the dough, resulting in its layered structure. A smaller version, "kouignette", is similar to a muffin-shaped, caramelized [croissant](#).

A specialty of the town of [Douarnenez](#) in [Finistère](#), [Brittany](#), where it originated around 1860, the pastry is attributed to Yves-René Scordia (1828–1878).^[1]

A specialty of the town of [Douarnenez](#) in [Finistère](#), [Brittany](#), where it originated around 1860, the pastry is attributed to Yves-René Scordia (1828–1878).^[1] The name comes from the Breton language words for cake ([kouign](#)) and butter ([amann](#)), and in 2011 the *New York Times* described the kouign-amann as "the fattiest pastry in all of Europe."^[2]

Recipe [edit]



Individual cake

The strict original Douarnenez recipe requires a ratio of 40 percent dough, 30 percent butter, and 30 percent sugar.^[3] Traditionally, kouign-amann is baked as a large cake and served in slices, although recently, especially in North America, individual cupcake-sized pastries (kouignettes) have become more popular.^[*citation needed*]

Popularity [edit]

The kouign-amann has been a staple pastry at many Japanese bakeries after becoming popular in the late 1990s.^{[4][5]}

In 2014, episode 7 of *series 5* of the BBC's *The Great British Bake Off*^[6] featured the kouign-amann. In 2015, notable bakeries in New York,^[7]

Temporary account ✕

This temporary account was created after an edit was made without an account on this browser and device. It will expire in 90 days. [Learn more.](#)

[Log in](#) or [create an account](#) to get credit for future edits and to access other features.



Kouign amann pastry

Type	Cake
Place of origin	France
Region or state	Brittany
Main ingredients	Yeast-leavened dough, butter, sugar

[Media: Kouign-amann](#)

A TEMPORARY ACCOUNT IS CREATED AFTER THE PERSON SAVES THEIR EDIT.

Unregistered editor: Subsequent edits

Kouign-amann

Article Talk

Read Edit View history

Paragraph Undo Redo Bold Italic Link Cite List Insert Link



Publish changes...

Kouign-amann (pronounced [kwɛ̃j̃ a mɑ̃]; pl. *kouignoù-amann*) is a sweet **Breton cake**, made with **laminated dough**. It is with bread dough (nowadays sometimes **viennoiserie** dough), containing layers of butter and incorporated sugar, similar layers. The cake is slowly baked until the sugar **caramelizes** and the recipe's butter (in fact the steam of the 20 percent resulting in its layered structure. A smaller version, "kouignette", is similar to a muffin-shaped, caramelized **croissant**.

A specialty of the town of **Douarnenez** in **Finistère, Brittany**, where it originated around 1860, the pastry is attributed to

A specialty of the town of **Douarnenez** in **Finistère, Brittany**, where it originated around 1860, the pastry is attributed to name comes from the Breton language words for cake (**kouign**) and butter (**amann**), and in 2011 the *New York Times* described the kouign-amann as "the fattest pastry in all of Europe."^[2]

Recipe [edit]



Individual cake

The strict original Douarnenez recipe requires a ratio of 40 percent dough, 30 percent butter, and 30 percent sugar.^[3] Traditionally, kouign-amann is baked as a large cake and served in slices, although recently, especially in North America, individual cupcake-sized pastries (kouignettes) have become more popular.^[*citation needed*]

Popularity [edit]

The kouign-amann has been a staple pastry at many Japanese bakeries after becoming popular in the late 1990s.^{[4][5]}

In 2014, episode 7 of *series 5* of the BBC's *The Great British Bake Off*^[6] featured the kouign-amann. In 2015, notable bakeries in New York,^[7] Washington D.C.,^[8] Boston,^[8] Salt Lake City,^[9] and San Francisco began to sell the pastry.^{[10][11][12]} In **Denver**, several bakeries offer varieties; some shorten the name to "queen".^[13]

1 notice



You are using a temporary account.

Your edit will be attributed to **?1729**.
Log in or **create an account** to get credit for future edits and access other features.

Kouign Amann



Kouign amann pastry

Type	Cake
Place of origin	France
Region or state	Brittany
Main ingredients	Yeast-leavened dough, butter, sugar

Media: Kouign-amann

Unregistered editor: Temporary account expiry

Kouign-amann

✓ Your edit was saved.

Article Talk

From Wikipedia, the free encyclopedia

Kouign-amann (pronounced [kwɛ̃j̃ aˈmɑ̃n]; pl. *kouignoù-amann*) is a sweet **Breton cake**, made with **laminated dough**. It is a round multi-layered cake, originally made with bread dough (nowadays sometimes *viennoiserie* dough), containing layers of butter and incorporated sugar, similar in fashion to **puff pastry**, albeit with fewer layers. The cake is slowly baked until the sugar **caramelizes** and the recipe's butter (in fact the steam of the 20 percent water in the butter) expands the dough, resulting in its layered structure. A smaller version, "kouignette", is similar to a muffin-shaped, caramelized **croissant**.

A specialty of the town of **Douarnenez** in **Finistère, Brittany**, where it originated around 1860, the pastry is attributed to Yves-René Scordia (1828–1878).^[1]

A specialty of the town of **Douarnenez** in **Finistère, Brittany**, where it originated around 1860, the pastry is attributed to Yves-René Scordia (1828–1878).^[1] The name comes from the Breton language words for cake (*kouign*) and butter (*amann*), and in 2011 the *New York Times* described the kouign-amann as "the fattiest pastry in all of Europe."^[2]

Recipe [edit]



Individual cake

The strict original Douarnenez recipe requires a ratio of 40 percent dough, 30 percent butter, and 30 percent sugar.^[3] Traditionally, kouign-amann is baked as a large cake and served in slices, although recently, especially in North America, individual cupcake-sized pastries (kouignettes) have become more popular.^[*citation needed*]

Popularity [edit]

Temporary account ×
You are using a temporary account. Edits are being attributed to **?1729**.
The account will expire in **N days**.
Log in or **create an account** to get credit for future edits and access **other features**.

Kouign Amann



Kouign amann pastry

Type	Cake
Place of origin	France
Region or state	Brittany
Main ingredients	Yeast-leavened dough, butter, sugar

Media: Kouign-amann

LET PEOPLE KNOW THE
LIFESPAN OF A
TEMPORARY ACCOUNT
AND ENCOURAGE THEM
TO MAKE AN ACCOUNT.

Admin workflow: Revealing IP addresses



WIKIPEDIA
The Free Encyclopedia

Main page
Contents
Current events
Random article
About Wikipedia
Contact us
Donate

Contribute

Help
Learn to edit
Community portal
Recent changes
Upload file

Tools
What links here
Related changes
 Atom
Special pages
Page information
Wikidata item

Languages

PritiPatroller [Talk](#) [Contributions](#) [Preferences](#) [Watchlist](#) [Log out](#)

Article [Talk](#)

[Read](#) [Edit](#)

[View history](#)

Savitribai Phule: Revision history

[Help](#)

[View logs for this page](#) ([view filter log](#))

Filter revisions

External tools: [Find addition/removal](#) ([Alternate](#)) · [Find edits by user](#) ([Alternate](#)) · [Page statistics](#) · [Pageviews](#) · [Fix dead links](#)

For any version listed below, click on its date to view it. For more help, see [Help:Page history](#) and [Help:Edit summary](#). (cur) = difference from current version, (prev) = difference from preceding version, **m** = minor edit, **→** = section edit, **←** = automatic edit summary
(newest | oldest) View (newer 50 | older 50) (20 | 50 | 100 | 250 | 500)

Compare selected revisions

- ([cur](#) | [prev](#)) HH:MM, DD Mon YYYY . . [Killy](#) ([talk](#) | [contribs](#)) . . (BBB bytes) (+2) . . (Reason) ([undo](#))
- ([cur](#) | [prev](#)) HH:MM, DD Mon YYYY . . [Beatle7](#) ([talk](#) | [contribs](#)) . . (BBB bytes) (+2) . . (Reason) ([undo](#))
- ([cur](#) | [prev](#)) HH:MM, DD Mon YYYY . . [?1729](#) **Show IP** ([talk](#) | [contribs](#)) . . (BBB bytes) (+2) . . (Reason) ([undo](#))
- ([cur](#) | [prev](#)) HH:MM, DD Mon YYYY . . [ThaBot](#) ([talk](#) | [contribs](#)) . . (BBB bytes) (+2) . . (Reason) ([undo](#))
- ([cur](#) | [prev](#)) HH:MM, DD Mon YYYY . . [SMB](#) ([talk](#) | [contribs](#)) . . (BBB bytes) (+2) . . (Reason) ([undo](#))
- ([cur](#) | [prev](#)) HH:MM, DD Mon YYYY . . [?1729](#) **Show IP** ([talk](#) | [contribs](#)) . . (BBB bytes) (+2) . . (Reason) ([undo](#))
- ([cur](#) | [prev](#)) HH:MM, DD Mon YYYY . . [?19743](#) **Show IP** ([talk](#) | [contribs](#)) . . (BBB bytes) (+2) . . (Reason) ([undo](#))
- ([cur](#) | [prev](#)) HH:MM, DD Mon YYYY . . [Beatle7](#) ([talk](#) | [contribs](#)) . . (BBB bytes) (+2) . . (Reason) ([undo](#))

Admin workflow: Revealing IP addresses



WIKIPEDIA
The Free Encyclopedia

[Main page](#)
[Contents](#)
[Current events](#)
[Random article](#)
[About Wikipedia](#)
[Contact us](#)
[Donate](#)

[Contribute](#)

[Help](#)
[Learn to edit](#)
[Community portal](#)
[Recent changes](#)
[Upload file](#)

[Tools](#)
[What links here](#)
[Related changes](#)
[Atom](#)
[Special pages](#)
[Page information](#)
[Wikidata item](#)

[Languages](#)

[PritiPatroller](#) [Talk](#) [Contributions](#) [Preferences](#) [Watchlist](#) [Log out](#)

Article [Talk](#)

[Read](#)

[Edit](#)

[View history](#)

Savitribai Phule: Revision history

[Help](#)

[View logs for this page](#) ([view filter log](#))

Filter revisions

External tools: [Find addition/removal](#) ([Alternate](#)) · [Find edits by user](#) ([Alternate](#)) · [Page statistics](#) · [Pageviews](#) · [Fix dead links](#)

For any version listed below, click on its date to view it. For more help, see [Help:Page history](#) and [Help:Edit summary](#). (cur) = difference from current version, (prev) = difference from preceding version, m = minor edit, → = section edit, ← = automatic edit summary (newest | oldest) View (newer 50 | older 50) (20 | 50 | 100 | 250 | 500)

Compare selected revisions

- [\(cur | prev\)](#) [HH:MM, DD Mon YYYY](#) . . [Killy](#) ([talk](#) | [contribs](#)) . . (BBB bytes) (+2) . . (Reason) ([undo](#))
- [\(cur | prev\)](#) [HH:MM, DD Mon YYYY](#) . . [Beatle7](#) ([talk](#) | [contribs](#)) . . (BBB bytes) (+2) . . (Reason) ([undo](#))
- [\(cur | prev\)](#) [HH:MM, DD Mon YYYY](#) . . [?1729](#) (42.42.42.42) ([talk](#) | [contribs](#)) . . (BBB bytes) (+2) . . (Reason) ([undo](#))
- [\(cur | prev\)](#) [HH:MM, DD Mon YYYY](#) . . [ThaBot](#) ([talk](#) | [contribs](#)) . . (BBB bytes) (+2) . . (Reason) ([undo](#))
- [\(cur | prev\)](#) [HH:MM, DD Mon YYYY](#) . . [SMB](#) ([talk](#) | [contribs](#)) . . (BBB bytes) (+2) . . (Reason) ([undo](#))
- [\(cur | prev\)](#) [HH:MM, DD Mon YYYY](#) . . [?1729](#) (122.33.23.89) ([talk](#) | [contribs](#)) . . (BBB bytes) (+2) . . (Reason) ([undo](#))
- [\(cur | prev\)](#) [HH:MM, DD Mon YYYY](#) . . [?19743](#) [Show IP](#) ([talk](#) | [contribs](#)) . . (BBB bytes) (+2) . . (Reason) ([undo](#))
- [\(cur | prev\)](#) [HH:MM, DD Mon YYYY](#) . . [Beatle7](#) ([talk](#) | [contribs](#)) . . (BBB bytes) (+2) . . (Reason) ([undo](#))

Admin workflow: Revealing IP addresses



WIKIPEDIA
The Free Encyclopedia

[Main page](#)
[Contents](#)
[Current events](#)
[Random article](#)
[About Wikipedia](#)
[Contact us](#)
[Donate](#)

[Contribute](#)
[Help](#)
[Learn to edit](#)


[PritiPatroller](#) [Talk](#) [Contributions](#) [Preferences](#) [Watchlist](#) [Log out](#)

Special page

User contributions for ?1729 Help

For ?1729 ([talk](#) | [block log](#) | [logs](#) | [filter log](#))

- [HH:MM, DD Mon YYYY](#) ([diff](#) | [hist](#)) . . (+2) . . [Show IP](#) . . [PageName](#) (Reason) **(current)**
- [HH:MM, DD Mon YYYY](#) ([diff](#) | [hist](#)) . . (+2) . . [Show IP](#) . . [PageName](#) (Reason)
- [HH:MM, DD Mon YYYY](#) ([diff](#) | [hist](#)) . . (+2) . . [Show IP](#) . . [PageName](#) (Reason) **(current)**



WIKIPEDIA
The Free Encyclopedia

[Main page](#)
[Contents](#)
[Current events](#)
[Random article](#)
[About Wikipedia](#)
[Contact us](#)
[Donate](#)

[Contribute](#)

[PritiPatroller](#) [Talk](#) [Contributions](#) [Preferences](#) [Watchlist](#) [Log out](#)

Special page

User contributions for ?1729 Help

For ?1729 ([talk](#) | [block log](#) | [logs](#) | [filter log](#))

- [HH:MM, DD Mon YYYY](#) ([diff](#) | [hist](#)) . . (+2) . . 42.42.42.42 . . [PageName](#) (Reason) **(current)**
- [HH:MM, DD Mon YYYY](#) ([diff](#) | [hist](#)) . . (+2) . . 122.33.23.89 . . [PageName](#) (Reason)
- [HH:MM, DD Mon YYYY](#) ([diff](#) | [hist](#)) . . (+2) . . 122.33.23.89 . . [PageName](#) (Reason) **(current)**

Admin workflow: Blocking temporary accounts



WIKIPEDIA
The Free Encyclopedia

[Main page](#)
[Contents](#)
[Current events](#)
[Random article](#)
[About Wikipedia](#)
[Contact us](#)
[Donate](#)

[Contribute](#)
[Help](#)
[Learn to edit](#)
[Community portal](#)
[Recent changes](#)
[Upload file](#)

[Tools](#)
[Atom](#)
[User contributions](#)
[User logs](#)
[Special pages](#)
[Printable version](#)

[Languages](#)

[PritiPatroller](#) [Talk](#) [Contributions](#) [Preferences](#) [Watchlist](#) [Log out](#)

Special page

Search Wikipedia



Block user

[Help](#)

Use the form below to block write access from a specific IP address or username. This should be done only to prevent vandalism, and in accordance with policy. Fill in a specific reason below (for example, citing particular pages that were vandalized). You can block IP address ranges using the CIDR syntax; the largest allowed range is /16 for IPv4 and /19 for IPv6.

Username, IP address, or IP range

*1729

This is a temporary user using the following IPs: [103.125.51.171](#), [103.125.53.189](#), [see 43 more](#)

Block type

- Sitewide**
Blocks editing on all pages and namespaces. Also blocks default actions ([See help](#))
- Partial**
Allows you to select pages and namespaces to block. Doesn't block default actions but lets you block certain specific actions.

Pages

Add a page...

Namespaces

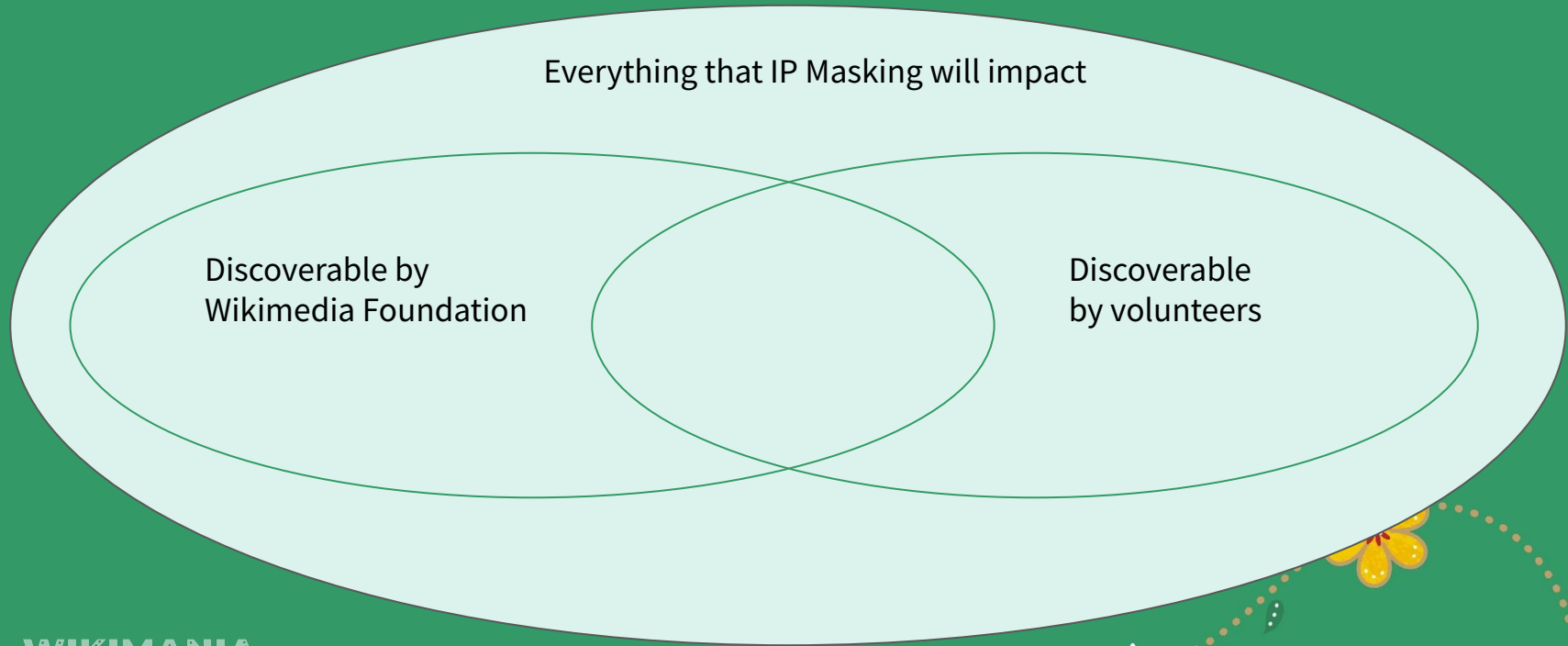
Add a namespace...

**Work
with us**

**WIKIMANIA
SINGAPORE**

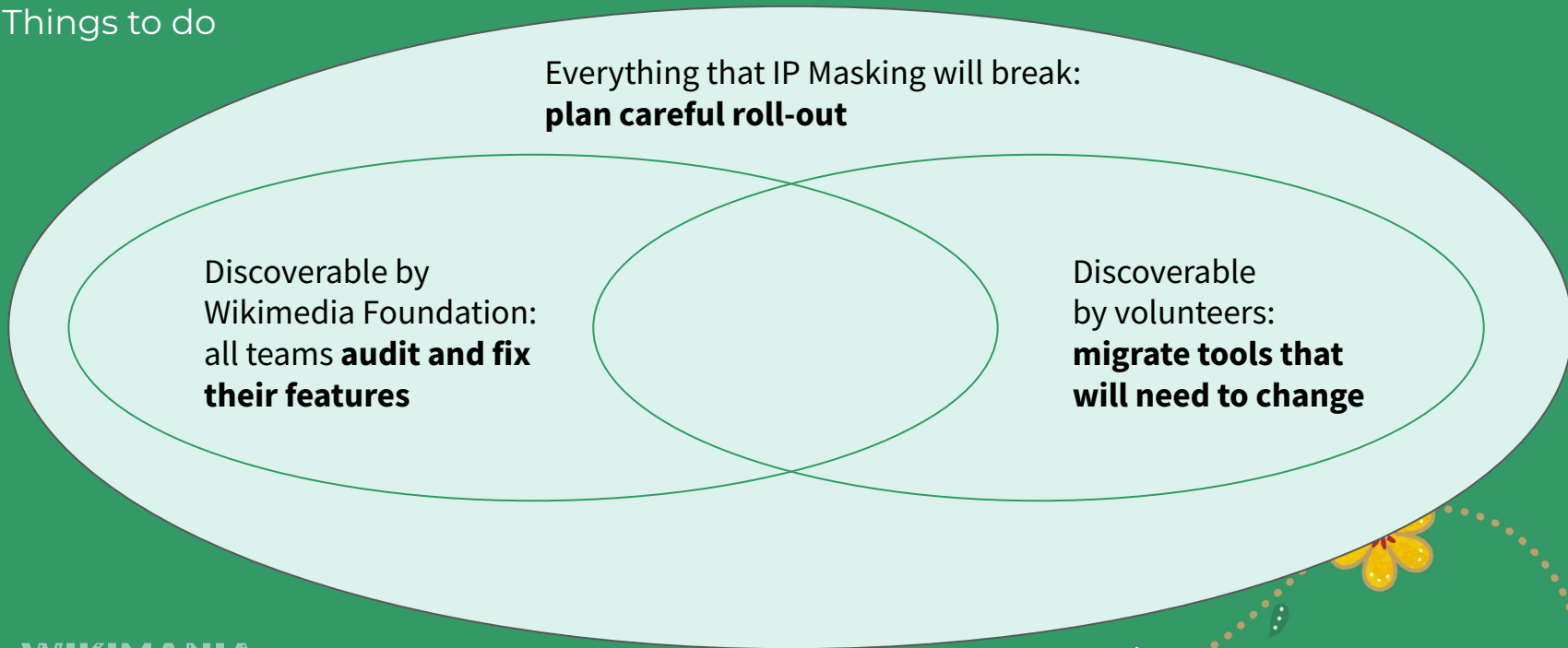


The IP Masking Universe

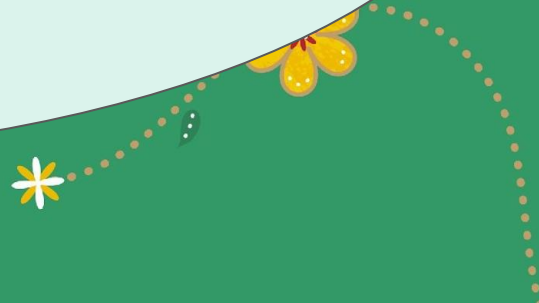


The IP Masking Universe

Things to do



WIKIMANIA
SINGAPORE



We need your help!

WIKIMANIA
SINGAPORE

Help us track down volunteer tools that will need changing.

- File tasks for impacted tools on Phabricator.
 - Use the tag [#IP Masking](#)
- You can also drop a comment on [\[\[phab:T337012\]\]](#)
- When mentioning a tool please include:
 - **A link to the tool**
 - **Brief description of what it does**
 - **The wiki(s) it is active on**

We need your help!

**WIKIMANIA
SINGAPORE**

- Help us expand technical documentation:
 - [\[\[mw:Help:Temporary accounts\]\]](#)
 - You can help us expand this to include specific guidance for gadgets, templates, lua modules etc.
- Help us migrate tools that will need migrations to adapt to the upcoming changes.

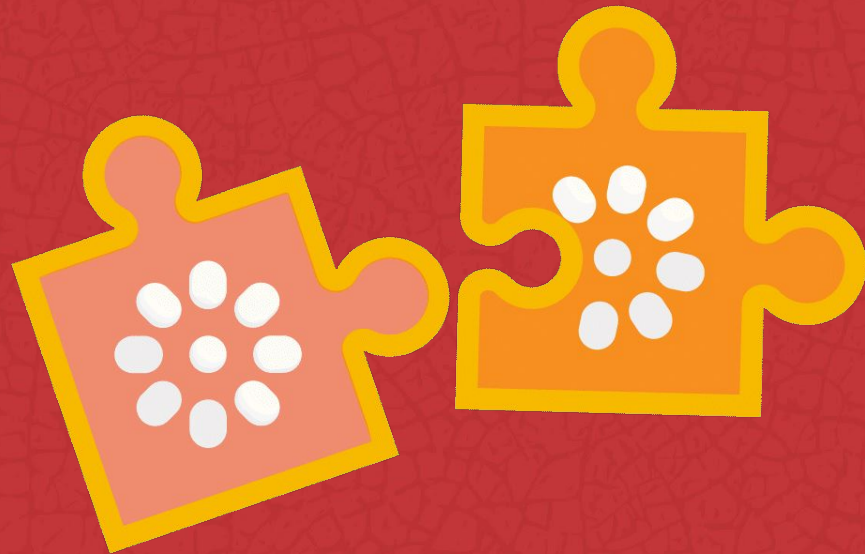
Resources

- Project page on Meta-Wiki: <https://w.wiki/3V8N>
- IP Masking work-in-progress is deployed on [German Beta Wikipedia](#) which can be used for testing purposes.
 - Note: Not all workflows have been implemented yet.
- Technical documentation on MediaWiki under [Help:Temporary Accounts](#)
- IP Masking main task on Phabricator: [\[\[phab:T324492\]\]](#)



Timeline

**WIKIMANIA
SINGAPORE**



Estimated roadmap

Milestone	Estimated completion time
First version of IP Masking in MediaWiki and deployed on test.wikipedia.org	End of 2023
WMF teams update software they own	October 2023
Pilot wiki test (on a small wiki without a lot of IP traffic)	March 2024
Volunteer-owned tools are updated	Until deployment on respective wikis



Thank you

Access this presentation at: <commons link>

Follow our project page for updates: <https://w.wiki/3V8N>
[[m:IP Editing: Privacy Enhancement and Abuse Mitigation]]

Let's continue talking in **Room 309**

WIKIMANIA
SINGAPORE

